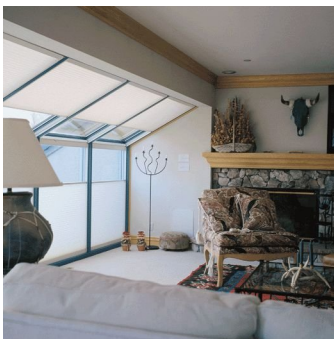


## Smart Energy Living® Solutions Fact Sheet



Honey comb shades have “pockets” built in that help trap unconditioned air, creating a more comfortable space



Shades installed with remote control makes managing your thermal comfort easy

### Window Coverings for Increased Efficiency

Window treatments improve your décor, protect your furnishings and can save you money on your energy bills. Even if you have old, drafty windows, you can cut down energy loss by using cost-effective, thermally efficient window coverings.

The energy efficiency of window coverings is measured in R-values, like insulation. The higher the R-value, the more it will protect your home from heat loss in winter and gain in summer.

Standard window blinds have an insulating value of less than

R-1. Using shades or heavier draperies with insulated linings can dramatically cut back on heat loss – raising the R-value of a single-pane window from R-1 up to R-6! Window coverings with a honeycomb or cellular construction can block 70% or more of heat transfer.

**Window Covering Choices**  
Some window covering choices include cellular or honeycomb shades, window quilts, draperies and Roman shades, and shutters. R-value results for window coverings vary depending upon the window pane, frame, fabric and tightness of the covering within the window frame.  
(continued on next page)

## Providing Smart Energy Solutions for Colorado Consumers

The Blind Spot, an independent small business specializing in residential and commercial custom window coverings and treatments, offers a large selection of products from name brand and quality manufacturers. Everything from simple manually operated blinds shades and draperies to sophisticated remote control motorized applications and richly-appointed, layered over-treatments, they offer fashionable solutions for the situation and budget.

Knowledgeable and experienced consultation, service and installation are key to a successful project.



Serving the Front Range since 1994

The Blind Spot  
Shop-at-Home Service  
303-973-1235  
info@theblindspot.biz

Visit our website to learn more  
[www.theblindspot.biz](http://www.theblindspot.biz)

The Blind Spot uses only certified master installers.

Types of applications include standard rectangular, many specialty shapes, skylights, and motorized products—from simple remote switches to integrated, automated solutions.

The Blind Spot has provided consultation and installation of energy efficient window coverings for Energy Makeover winners, improving comfort and beauty in the home. Ask to see the Hunter Douglas Duette® Architella™ with R-values up to 7.86. Most fabrics qualify for the federal tax credit.

## Window Treatments

### Window Treatments – Continued

- Cellular or honeycomb actually trap the cold air, decreasing the intensity of the temperature as it enters the room. And this, in turn, helps minimize the amount of heat that is drawn toward your windows. Honeycomb shades can have an R-value greater than 4.00. Window quilts offer air and moisture-tight fabric along with 4-sided seals.
- Quilts have an R-value around 5.00 . However, they tend to be bulkier and more difficult to operate than other options.
- Draperies and Roman Shades can be thermally lined to increase efficiency. R-values range from 3.0 to 5.0, with actual R-values dependent on fabric, lining and pleating.
- Shutters can offer R-values between 1.50 to over 2.50 depending on the materials and design.

When selecting window coverings be sure to note whether R-values quoted for various products are for the covering alone or add the R-value of the window itself (for example single pane window; double glazed, low-e glass, etc.).

### Installation

Shades, draperies, or shutters are more effective if they are mounted inside the jamb and/or custom fitted, because they create a restricted air space between themselves and the glass.

When properly installed, window shades can be one of the simplest and most effective means to save energy. Shades should be mounted as close to the window frame as possible with the sides of the shade held close to the wall or jamb to minimize any air gap.

If you decide to have window coverings custom-fitted for your home to maximize efficiency, make sure the sales consultant and installer has a thorough understanding of the energy efficiency properties described above.

**Go to [www.SmartEnergyLiving.org](http://www.SmartEnergyLiving.org) for More Information About Energy Efficiency**

**Smart Energy Living Alliance®** is a 501(c)(3) non-profit organization dedicated to helping consumers, like you, make smart energy decisions and ensuring qualified professionals are available to meet consumer needs. We provide unbiased information, tools and resources, including connecting you to local energy businesses.

The managing partners of the U.S. Department of Energy's National Renewable Energy Laboratory (NREL) created us in 1999. We publish an award-winning magazine, Smart Energy Living, in partnership with NREL.

For a free subscription to Smart Energy Living magazine or newsletter, or other helpful information on energy conservation, energy efficiency and renewable energy, go to [www.SmartEnergyLiving.org](http://www.SmartEnergyLiving.org). Thank you for helping us Build a Better Energy Future.



**Smart Energy Living  
Alliance®**

*Building a better energy future*